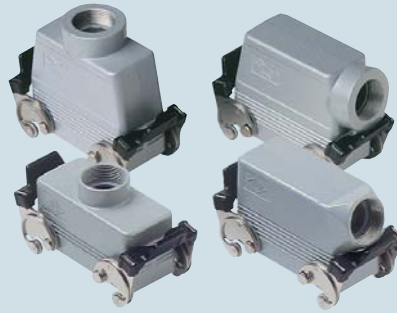




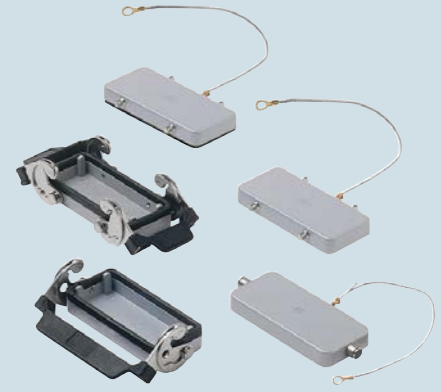
inserts:		page
CD .....	40 poles + ⊕	43
CDD .....	72 poles + ⊕	56
CQE .....	32 poles + ⊕	76
CN .....	16 poles + ⊕	82
CCE .....	16 poles + ⊕	90
CNE, CSE.....	16 poles + ⊕	91
CSS .....	16 poles + ⊕	100
CMSE .....	6+2 (aux) poles + ⊕	116
CMCE .....	6+2 (aux) poles + ⊕	116
CP .....	6 poles + ⊕	127
CX .....	6/36 and 12/2 poles + ⊕	130-131
CX .....	4/0 and 4/2 poles + ⊕	132
MIXO .....	4 modules	137-151

insert centre distance:  
77.5 x 27 mm

hoods with 2 levers



covers



description	part No.	entry Pg	part No.	entry M	part No.
with levers, side entry <sup>1)</sup>	<b>CHO 16 X</b>	21	<b>MHO 16 X25</b>	25	
with levers, side entry <sup>1)</sup>			<b>MHO 16 X32</b>	32	
with levers, side entry, high construction <sup>1)</sup>	<b>CAO 16 X</b>	21	<b>MAO 16 X32</b>	32	
with levers, side entry, high construction <sup>1)</sup>	<b>CAO 16 X29</b>	29	<b>MAO 16 X40</b>	40	
with levers, top entry <sup>1)</sup>	<b>CHV 16 X</b>	21	<b>MHV 16 X25</b>	25	
with levers, top entry <sup>1)</sup>			<b>MHV 16 X32</b>	32	
with levers, top entry, high construction <sup>1)</sup>	<b>CAV 16 X</b>	21	<b>MAV 16 X32</b>	32	
with levers, top entry, high construction <sup>1)</sup>	<b>CAV 16 X29</b>	29	<b>MAV 16 X40</b>	40	
with 4 pegs (for housings with 2 levers with gasket)					<b>CHC 16</b>
with 4 pegs and gasket (for housings with 2 levers) <sup>2)</sup>					<b>CHC 16 C</b>
with 2 pegs (for housings with 1 lever with gasket)					<b>CHC 16 L</b>
with 2 levers (for hoods with 4 pegs)					<b>CHC 16 G</b>
with 1 lever (for hoods with 2 pegs)					<b>CHC 16 LG</b>

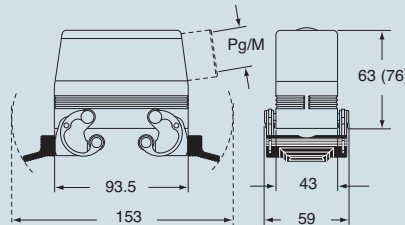
<sup>1)</sup> May be combined with housings:  
- CHI/CHP/CAP 16 CS/CP/C  
- MHP/MAP 16 CS/CP

<sup>2)</sup> May be combined with hoods:  
- CHO/CAO 16 X and CHV/CAV 16 X  
- MHO/MAO 16 X and MHV/MAV 16 X

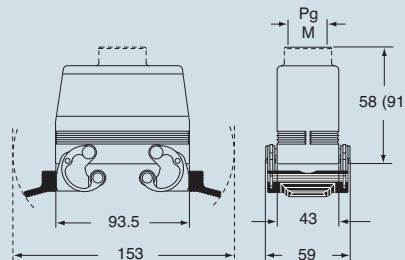
The covers for C, G and LG, versions cannot be used together with coding pins. If this application is required, please contact ILME SpA.

dimensions in mm

CHO X (CAO X) and MHO X (MAO X)



CHV X (CAV X) and MHV X (MAV X)



dimensions in mm

CHC



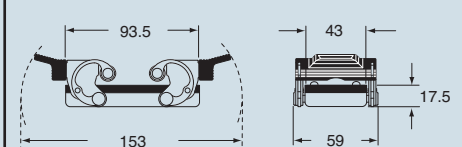
CHC C



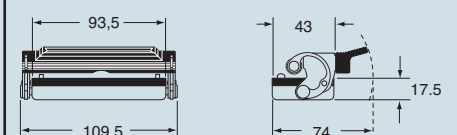
CHC L



CHC G



CHC LG



**CAUS**® Type 4/4X/12

dimensions shown are not binding and may be changed without notice

size 77.27